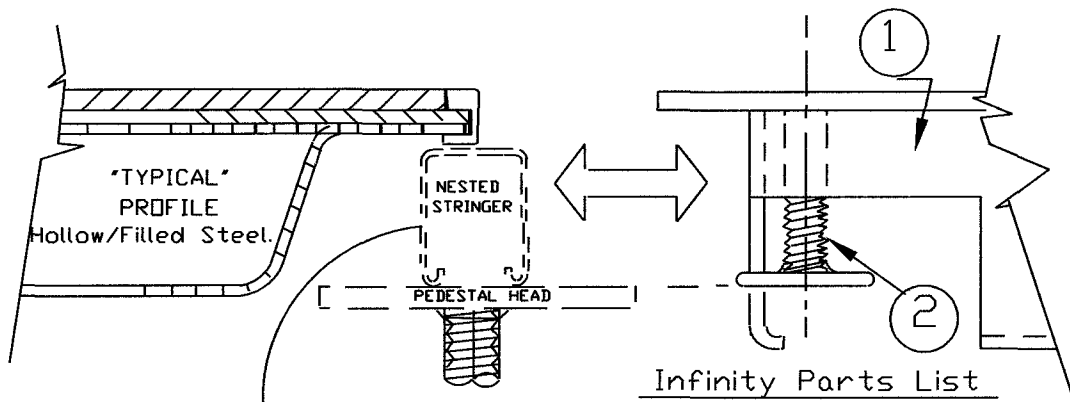


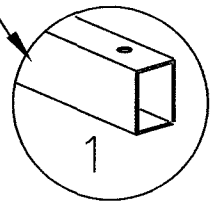
# "APPLICATION GUIDE" (INFINITY AIR GRATE-55 SERIES.)



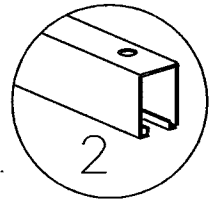
Infinity Parts List

- ① Infinity Grate. (P/N: ISG55-15)
- ② Leveling Leg. (P/N: CLX)

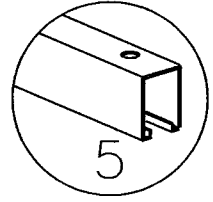
MFR. Tate/#2989  
 Stringer dims, 22.15/16" L  
                   5/8" W  
                   1.1/8" H  
 Hole Ctrs, 21.3/4"  
 Stringer Type: Bolt on.



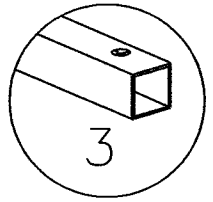
MFR: IAR/Atlantic  
 Stringer dims, 23" L  
                   13/16" W  
                   1.1/4" H  
 Hole Ctrs, 21.3/4"  
 Stringer Type: Heavy Duty Bolt on.



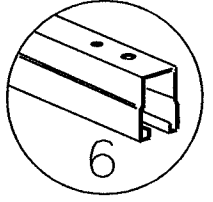
MFR. Tate  
 Stringer dims, 23" L  
                   13/16" W  
                   1.1/4" H  
 Hole Ctrs, 22"  
 Stringer Type: Bolt on.



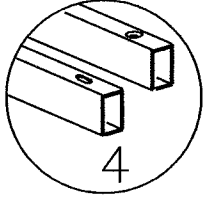
MFR: Unknown  
 Stringer dims, 22.7/8" L  
                   1" W  
                   1" H  
 Hole Ctrs, 22"  
 Stringer Type: Bolt on.



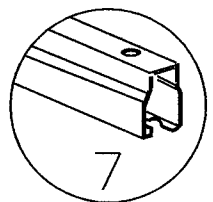
MFR. Severn  
 Stringer dims, 23.1/16" L  
                   13/16" W  
                   1.1/16" H  
 Hole Ctrs, 22.1/2"  
 Stringer Type: Drop on.



MFR: ASM Modular Systems.  
 Stringer dims, 22.15/16" L  
                   13/16" W  
                   1.1/4" H  
 Hole Ctrs, 22"  
 Stringer Type: Bolt on.



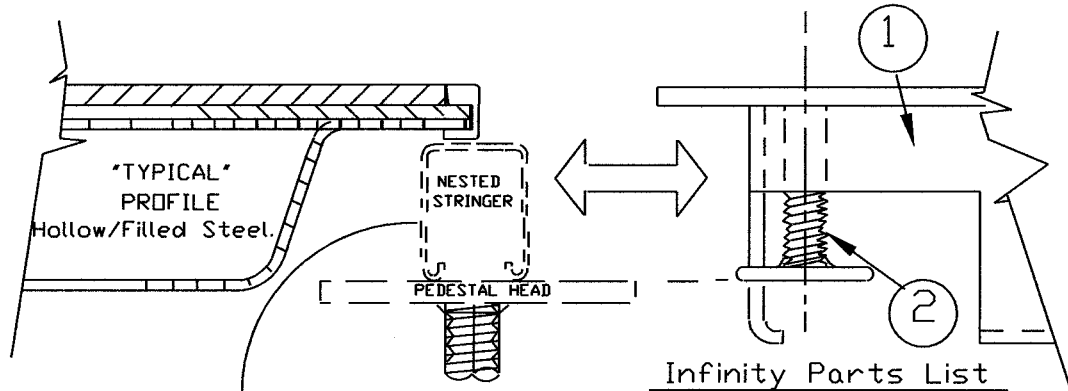
MFR. Donn Bolted  
 Stringer dims, 23.1/16 L  
                   13/16" W  
                   1.1/16" H  
 Hole Ctrs, 22"  
 Stringer Type: Bolt on.



USE INFINITY PARTS LIST ABOVE  
 FOR STRINGER APPLICATIONS.  
 SHOWN ON LOWER PAGE AREA.

OPSTOCK, INC. 401 HALL STREET, SW. GRAND RAPIDS, MI 49503 P: 616 241 6720 F: 616 241 6730			
SIZE	FSCM NO.	DWG NO.	REV
		APPLICATION GUIDE	
SCALE: NTS.		DWG 39C-1	

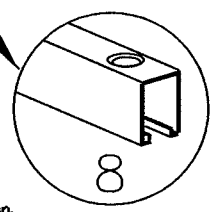
# "APPLICATION GUIDE" (INFINITY AIR GRATE-55 SERIES.)



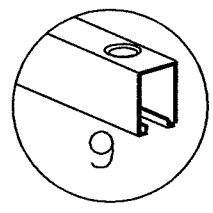
Infinity Parts List

- \* ① Infinity Grate. (P/N: ISG55-15)
- ② Leveling Leg. (P/N: CLX).

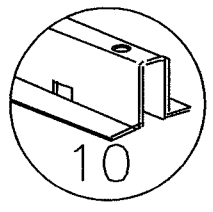
MFR. Tate Heavy Duty  
 Stringer dims, 23" L  
 13/16" W  
 1.1/4" H  
 Hole Ctrs, 22"  
 Stringer Type: Bolt on.  
 Heavy Duty Floor. Tate #590956 Bolt on.



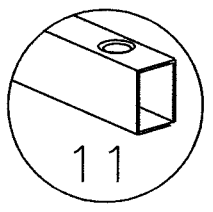
MFR. Maxcess BG2  
 Stringer dims, 22.7/8" L  
 13/16" W  
 1.1/4" H  
 Hole Ctrs, 22"  
 Stringer Type: Bolt on.



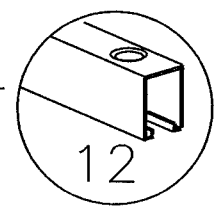
\*  
MFR. C-Tec/IAR/Haworth  
 Stringer dims, 22.7/8" L  
 1.3/16" W  
 1.1/16" H  
 Hole Ctrs, 22"  
 Stringer Type: Bolt on.



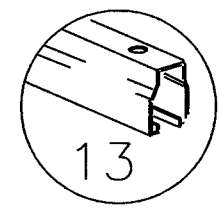
MFR. Tate/S-707  
 Stringer dims, 22.13/16" L  
 5/8" W  
 1" H  
 Hole Ctrs, 22.3/8"  
 Stringer Type: Drop on.



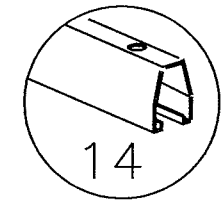
MFR. Custom  
 Stringer dims, 23.3/16 L  
 13/16" W  
 1.1/4" H  
 Hole Ctrs, 22.3/8"  
 Stringer Type: Bolt on.



MFR. Severn  
 Stringer dims, 23.1/16" L  
 13/16" W  
 1.1/16" H  
 Hole Ctrs, 20.1/2"  
 Stringer Type: Cuff-Link.

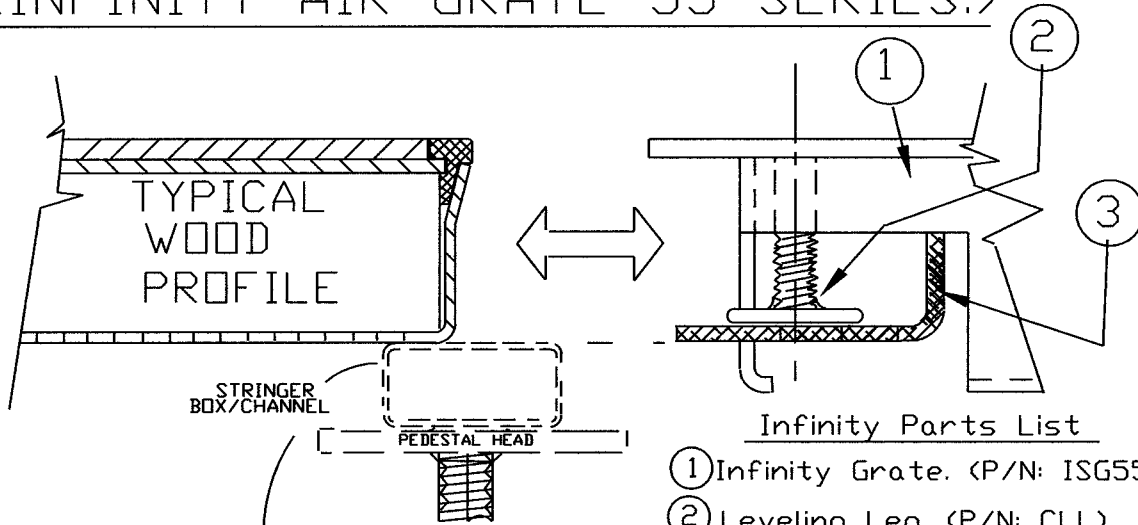


MFR. Lisky Mark 40  
 Stringer dims, 22.7/8" L  
 7/8" W  
 1.1/8" H  
 Hole Ctrs, 22"  
 Stringer Type: Bolt on.



\* Note-"Tight Fit" Probability  
 USE INFINITY PARTS LIST ABOVE FOR STRINGER APPLICATIONS.  
 SHOWN ON LOWER PAGE AREA.

# "APPLICATION GUIDE" (INFINITY AIR GRATE-55 SERIES.)

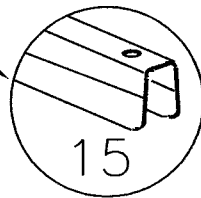


### Infinity Parts List

- ① Infinity Grate. (P/N: ISG55-15).
- ② Leveling Leg. (P/N: CLL)
- ③ "Z" plate. (P/N: ZPW)

MFR: ASM/MAXCESS

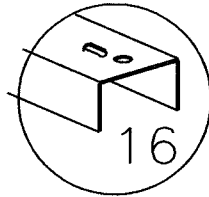
Stringer dims, 22.7/8" L  
7/8" W  
1.1/8" H  
Hole Ctrs, 22"  
Stringer Type: Snap on.



15

MFR: Computer Environments

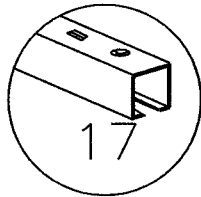
Stringer dims, 21.7/8 L  
1.1/8" W  
3/4" H  
Hole Ctrs, 21.1/2"  
Stringer Type: Bolt on.



16

MFR: Tate/ Wood Core.

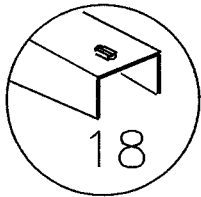
Stringer dims, 22.13/16" L  
1" W  
3/4" H  
Hole Ctrs, 21"  
Stringer Type: Bolt on.



17

Unknown

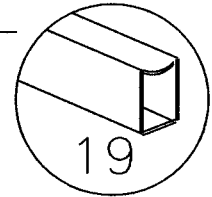
MFR: ASM Modular Systems.  
Stringer dims, 22.5/16" L  
1.1/8" W  
5/8" H  
Hole Ctrs, 21.1/2"  
Stringer Type: Bolt on.



18

MFR: Camino Wood Core.

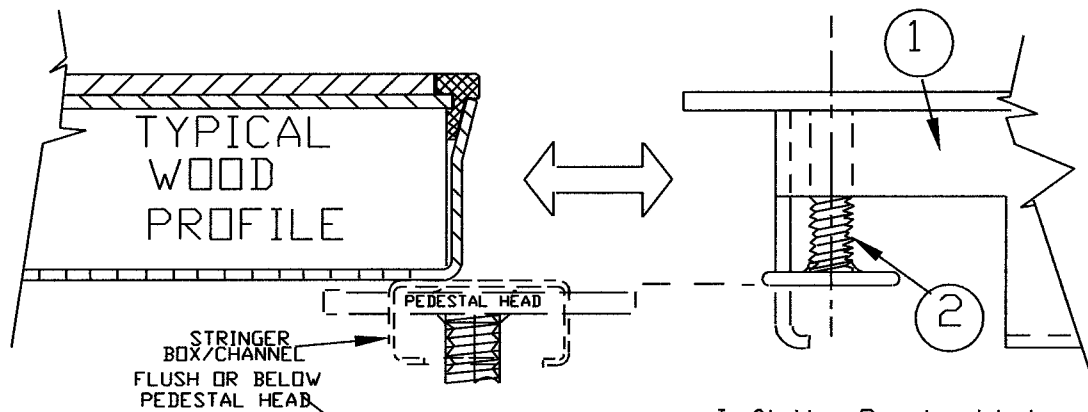
Stringer dims, 22.7/8" L  
1" W  
1.1/4" H  
Hole Ctrs, 20.1/2"  
Stringer Type: Bolt on.  
Canadian design Old Style.



19

USE INFINITY PARTS LIST ABOVE FOR STRINGER APPLICATIONS.  
SHOWN ON LOWER PAGE AREA.

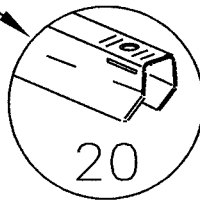
# "APPLICATION GUIDE" (INFINITY AIR GRATE-55 SERIES.)



### Infinity Parts List

- ① Infinity Grate. (P/N: ISG55.-15)
- ② (Leveling Leg. (P/N: CLL).

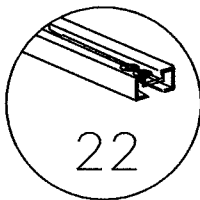
MFR. C-Tec PSL-1  
 Stringer dims, 22.5/8" L  
 5/8" W  
 1" H  
 Hole Ctrs, 21.7/8"  
 Stringer Type: Twist-on/Bolted.



MFR: Custom.  
 Stringer dims, 23.1/4" L  
 1" W  
 1" H  
 Hole Ctrs, 20.3/4"  
 Stringer Type: Bolt on.

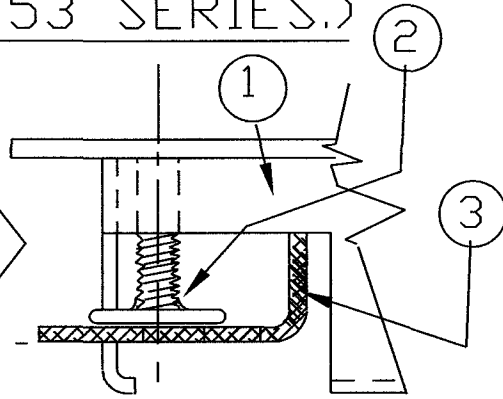
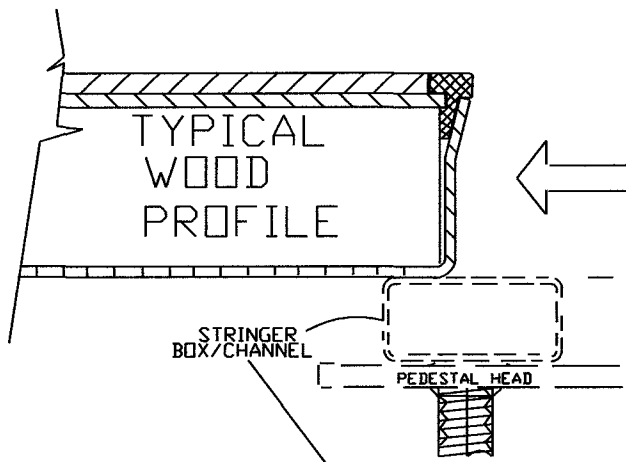


MFR: Westinghouse  
 Stringer dims, 22.7/8" L  
 1" W  
 9/16" H  
 Hole Ctrs, 22.5/16"  
 Stringer Type: Bolt on.  
 Wood Core



USE INFINITY PARTS LIST ABOVE FOR STRINGER APPLICATIONS.  
 SHOWN ON LOWER PAGE AREA.

# "APPLICATION GUIDE" (INFINITY AIR GRATE 53 SERIES.)

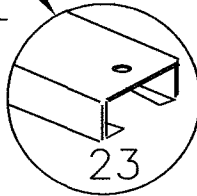


### Infinity Parts List

- ① Infinity Grate. (P/N, ISG53C-15)
- ② Leveling Leg. (P/N, CLL)  
"Included"
- ③ "Z" plate, (P/N, ZPW).  
"Included"

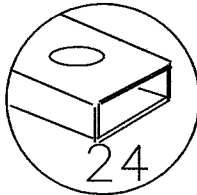
MFR. Computer Environments

Stringer dims, 22.5/16" L  
1.1/2" W  
13/16" H  
Hole Ctrs, 21.1/4"  
Stringer Type: Bolt on.



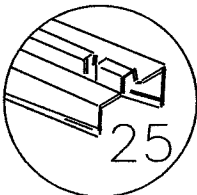
MFR. Donn/Low Profile

Stringer dims, 22.15/16" L  
1.1/4" W  
5/8" H  
Hole Ctrs, 21.7/16"  
Stringer Type: Bolt on.



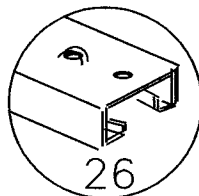
MFR: Waco 101

Stringer dims, 21" L  
1.1/4" W  
13/16" H  
Hole Ctrs, N/A.  
Stringer Type: Snap on.



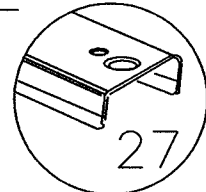
MFR: MaxcessWC5000

Stringer dims, 22.1/8" L  
1.5/8" W  
13/16" H  
Hole Ctrs, 21.1/8"  
Stringer Type: Bolt on.



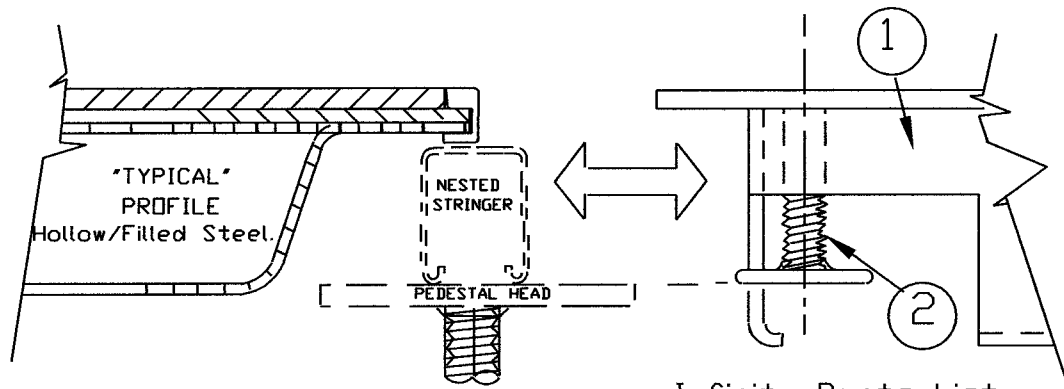
MFR. FSF Floors

Stringer dims, 22.5/16" L  
1.1/4" W  
7/8" H  
Hole Ctrs, 21.1/4"  
Stringer Type: Bolt on.



USE INFINITY PARTS LIST ABOVE FOR STRINGER APPLICATIONS.  
SHOWN ON LOWER PAGE AREA.

# "APPLICATION GUIDE" (INFINITY AIR GRATE 53 SERIES.)

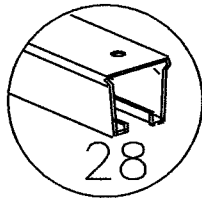


Infinity Parts List

- ① Infinity Grate. (P/N: ISG53L-15).
- ② 1" Leveling Leg, P/N: CLX). INCLUDED

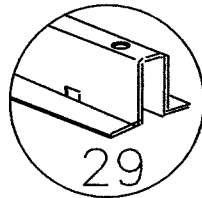
MFR. Tate/Mark 20/30

Stringer dims, 22.7/8" L  
 (1.7/16" w/pad.) 1" W  
 1.1/4" H  
 Hole Ctrs, 22"  
 Stringer Type: Bolt on.



MFR. C-Tec/IAR/Haworth.

Stringer dims, 22.7/8" L  
 1.3/16" W  
 1.1/16" H  
 Hole Ctrs, 22"  
 Stringer Type: Bolt on.

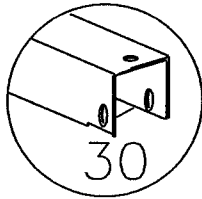


USE INFINITY PARTS LIST ABOVE FOR STRINGER APPLICATIONS.  
 SHOWN ON LOWER PAGE AREA.

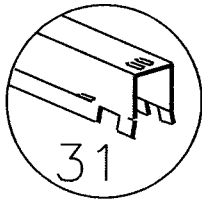
(INFINITY AIR GRATE)

INFINITY PARTS LIST (VARIES) CONSULT FACTORY.

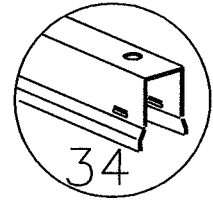
MFR: Unknown  
 Stringer dims, 22.1/2" L  
 1.1/2" W  
 1.3/4" H  
 Hole Ctrs, 21.1/2"  
 Stringer Type: Bolt on.  
 Heavy Duty Floor.



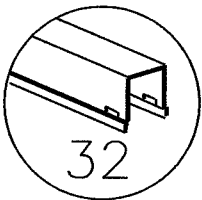
MFR: TateModel 801  
 Stringer dims, 22.15/16" L  
 3/4" W  
 1" H  
 Hole Ctrs, N/A.  
 Stringer Type: Snap on.



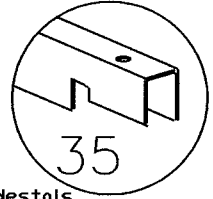
MFR: Donn/Snap on  
 Stringer dims, 22.7/8" L  
 3/4" W  
 1.1/4" H  
 Hole Ctrs, N/A  
 Stringer Type: Snap on.



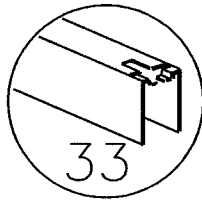
MFR: Donn  
 Stringer dims, 22.3/4" L  
 1" W  
 1.13/16" H  
 Hole Ctrs, N/A  
 Stringer Type: Bolt on.



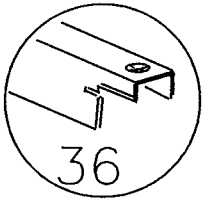
MFR: Custom.  
 Stringer dims, 22.11/16" L  
 1/2" W  
 1" H  
 Hole Ctrs, 21"  
 Stringer Type: Bolt on.  
 Use with C-Tec snap on pedestals  
 on stringerless applications



MFR: Unknown Custom.  
 Stringer dims, 22.11/16" L  
 13/16" W  
 1.1/4" H  
 Hole Ctrs, 21.9/32"  
 Stringer Type: Bolt on.



MFR: Unknown Custom.  
 Stringer dims, 22.7/16" L  
 5/8" W  
 1" H  
 Hole Ctrs, 21.11/16"  
 Stringer Type: Bolt on.



MFR: Custom, Tate 802 for Europe..  
 Stringer dims, 22.7/16" L  
 5/8" W  
 2" H  
 Hole Ctrs, 21.5/8"  
 Stringer Type: Bolt on.  
 European version of the series 802

